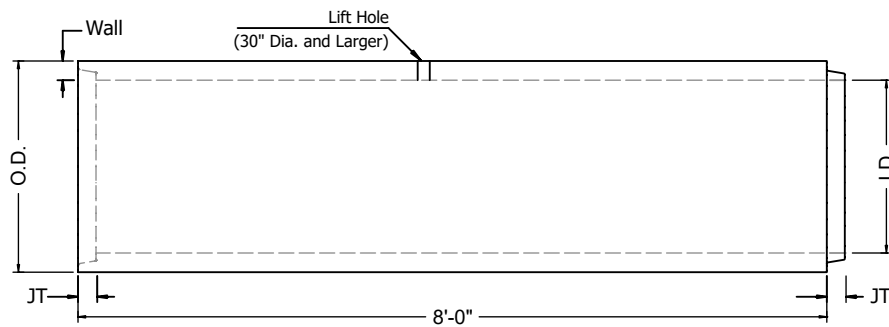


# Tongue and Groove Reinforced Concrete Pipe



I.D.	Wall	O.D.	JT	Approx. Weight Per Joint (Lbs)	Number of Joints Full Truck Load
15"	2¼"	19½"	2"	1,017	32
18"	2½"	23"	2¼"	1,360	35
24"	3"	30"	2¾"	2,170	22
30"	3½"	37"	3¼"	3,080	15
36"	4"	44"	3¾"	4,260	11
42"	4½"	51"	4"	5,610	8
48"	5"	58"	4¼"	7,150	6

## Notes:

- Pipe shall be made in accordance with ASTM C76, B wall minimum
- Class III, IV, and V meet minimum design strength required per ASTM
- Steel reinforcing cage meets typical standards



6905 South Old Bastrop Hwy  
 San Marcos Texas, 78666  
 PH: (830) 606-6200  
[capitalprecastinc.com](http://capitalprecastinc.com)

## Reinforced Concrete Pipe

Job:

Drawn:

AC

Rev:

Date:

6/5/2024